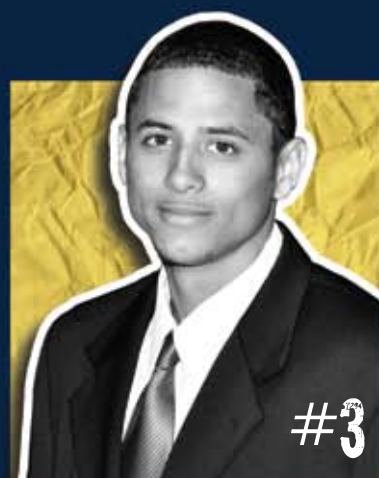


2010-11 Schedule

Date	Opponent	Home/Away	Time
Oct. 30	USM Alumni Game	Leavenworth, KS	7 p.m.
Nov. 6	Rhema Bible College	Tulsa, OK	3:30 p.m.
Nov. 9	Haskell University	Leavenworth, KS	8 p.m.
Nov. 12	Doane College	Peru, NE	5:30 p.m.
Nov. 13	Peru State College	Peru, NE	5 p.m.
Nov. 16	Haskell University	Lawrence, KS	7:30 p.m.
Nov. 19	Baker University (!)	Leavenworth, KS	7 p.m.
Nov. 20	Central Methodist University (!)	Leavenworth, KS	3 p.m.
Nov. 23	Benedictine College	Leavenworth, KS	7 p.m.
Nov. 24	Southwest Baptist University (#)	Bolivar, MO	7 p.m.
Nov. 26	South Dakota School of Mines	Rapid City, SD	8 p.m.
Nov. 27	Black Hills State University	Rapid City, SD	3 p.m.
Dec. 2	Tabor College *	Hillsboro, KS	8 p.m.
Dec. 4	Bethany College *	Leavenworth, KS	7 p.m.
Dec. 9	Friends University *	Wichita, KS	8 p.m.
Dec. 11	Sterling College *	Sterling, KS	7 p.m.
Dec. 18	Johnson & Wales University	Denver	4 p.m.
Jan. 3	Peru State College	Leavenworth, KS	7 p.m.
Jan. 6	Kansas Wesleyan University *	Leavenworth, KS	8 p.m.
Jan. 8	Ottawa University *	Ottawa, KS	4 p.m.
Jan. 13	Bethel College *	Newton, KS	8 p.m.
Jan. 15	McPherson College *	Leavenworth, KS	3:30 p.m.
Jan. 20	Southwestern College *	Leavenworth, KS	8 p.m.
Jan. 22	Tabor College *	Leavenworth, KS	5 p.m.
Jan. 27	Bethany College *	Lindsborg, KS	8 p.m.
Jan. 29	Friends University *	Leavenworth, KS	7 p.m.
Feb. 3	Sterling College *	Leavenworth, KS	8 p.m.
Feb. 5	Kansas Wesleyan University *	Salina, KS	7 p.m.
Feb. 10	Ottawa University *	Leavenworth, KS	8 p.m.
Feb. 12	Bethel College *	Leavenworth, KS	7 p.m.
Feb. 17	McPherson College *	McPherson, KS	8 p.m.
Feb. 19	Southwestern College *	Winfield, KS	7 p.m.
Feb. 21	KCAC Tournament	TBA	TBA
March 9	NAIA D-II National Tournament	Point Lookout, MO	TBA

(!) denotes KCAC/HAAC - Mr. Goodscents Classic
 (#) denotes exhibition game
 (*) denotes KCAC Conference game

2010-11 TOP RETURNERS



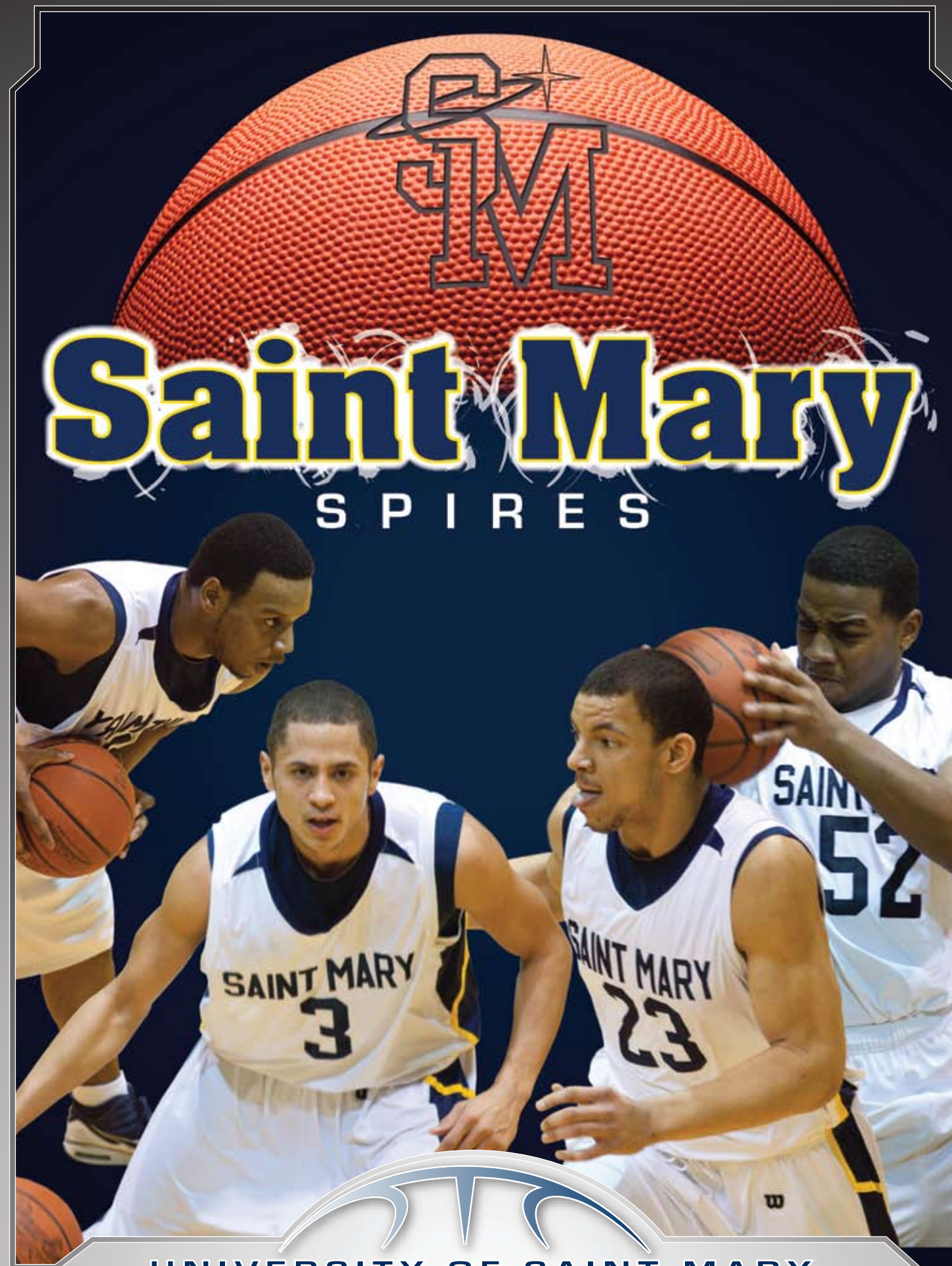
#3
BRANDON DOUGHERTY
 LEAVENWORTH, KAN.



#23
KORIE FISHER
 HIAWATHA, KAN.



#20
JEB GREENBERG
 LEAVENWORTH, KAN.



UNIVERSITY OF SAINT MARY
 2010-2011 MEDIA GUIDE



University of Saint Mary Basketball Quick Facts



Location: Leavenworth, Kansas
Founded: 1923
Enrollment: 993
President: Sister Diane Steele, Ph.D.
Dean of Students: Lisa Beckenbaugh, Ph.D.
Athletic Director: Rob Miller
Conference: Kansas Collegiate Athletic Conference
Athletic Affiliation: NAIA Division II
Nickname: Spires
Colors: Navy Blue and Gold
Home Court (Capacity): Ryan Sports Center (1,500)

Basketball History:

1st Year of Competition: 1994-1995
All-Time Record: 151-294
KCAC Championships: 2001
NAIA National Tournaments: 2001
Highest National Ranking: 13th in 2001

Team Information:

2009-10 Record: 17-14 (KCAC 8-10)
Letter Winners Returning/Lost: 8/8
Starters Returning/Lost: 3/2

Coaching Staff:

Jon Bishop - Head Coach Central Methodist University ('95)
Brian Rutz - Asst. Coach UW-Milwaukee ('09)
Anthony Spencer - Asst. Coach Marymount College ('91)

The University of Saint Mary was founded in 1923 by the Sisters of Charity of Leavenworth, who continue as sponsors of the university today. USM has been repeatedly named a "Best Midwestern College" by *The Princeton Review* based on academic excellence and feedback from students.

The University of Saint Mary mission is to educate students of diverse backgrounds to realize their God-given potential and prepare them for value-centered lives and careers that contribute to the well being of our global society.

Students enjoy a rich and varied educational experience defined not only by first-rate academics, but also by the opportunity to participate in athletics, cultural events, and other character-building activities. Small classes, personal attention from professors, and service-learning are hallmarks of all Saint Mary academic offerings, which includes 26 undergraduate programs and five graduate programs in business, education, and psychology.

The University of Saint Mary has three co-educational campuses with a combined population of 993 students. The main Leavenworth campus residence halls offer space for up to 310 students. USM satellite locations offering accelerated undergraduate degree-completion and graduate programs are in Overland Park and Kansas City, Kan.

University of Saint Mary students come from 42 U.S. states and eight countries. About 50 percent participate in athletics, and approximately 30 percent are Catholic. Over 95 percent of traditional-age students receive some kind of financial aid.

For more information about the opportunities at the University of Saint Mary go to www.stmary.edu. Visit www.gospire.com to learn more about USM athletics.



Head Coach: Jon Bishop (3rd Season)

The University of Saint Mary named Jon Bishop as head men's basketball coach in May of 2008. Bishop was the associate head coach at Pratt Community College in Pratt, Kan., after being the top assistant coach at Missouri Western State University from 2005-2007. He was an assistant coach at Kansas Wesleyan University from 2000-2002 and played for the Coyotes in 1992-1993 where he led the KCAC in scoring. Bishop also coached at Angelo State University, Northwest Missouri State University, and Central Methodist University. Bishop finished his collegiate basketball career at Central Methodist University in Fayette, Mo., where he was a 1994 NAIA Division II All-American guard for the Eagles.

Bishop earned an Associate of Arts degree in Communications from Hutchison Community College in 1992 and a Bachelor of Arts degree in Interdisciplinary Studies/Communications from Central Methodist University in 1995. In 2003 he earned a Master of Science degree in Physical Education/Athletic Administration from Northwest Missouri State University. Bishop and his wife Jennifer have two children, Caitlin, age 6, and Macy, age 2, and reside in Leavenworth, Kan.



Men's Basketball Roster

No.	NAME	POS	Ht.	Wt.	YR	Hometown
1	Chris Combs	G	6'2"	195	SO	Merrion, KS/Highland Community College
2	Devon Dougherty	G	6'1"	165	FR	Rogersville, MO/Fort Scott Community College
3	Brandon Dougherty	G	5'10"	160	SR	Leavenworth, KS/Fort Scott Community College
4	Brandon Coleman	G	6'3"	205	SR	Kansas City, MO/Pittsburg State University
5	Justin Crutchfield	G	6'3"	170	JR	Royce City, TX/Royce City High School
10	Chris Wing	G	6'0"	175	JR	Kansas City, KS/Penn Valley Community College
12	Aaron Connor	G	5'11"	150	FR	Kansas City, KS/Bishop Ward High School
13	John Hale	F	6'3"	210	SR	Junction City, KS/Kansas City Kansas Community College
20	JEB Greenberg	G	6'2"	185	SO	Leavenworth, KS/Leavenworth High School
21	Reggie Davis	F	6'5"	195	JR	Leavenworth, KS/Garden City Community College
22	Mark McGrory	F	6'6"	210	SO	Leavenworth, KS/Coffeyville Community College
23	Korie Fisher	G/F	6'4"	205	SR	Hiawatha, KS/Highland Community College
25	David Cheatom	G	5'10"	170	FR	Kansas City, KS/ Wyandotte High School
30	Gabriel Noll	F	6'5"	190	FR	Hiawatha, KS/Hiawatha High School
32	Nick White	C	6'5"	245	SR	Kansas City, KS/Garden City Community College
33	Quinten White	G	6'3"	180	JR	Kansas City, KS/Wyandotte High School
40	Chase Cook	F	6'6"	190	FR	Kansas City, KS/Piper High School
RS	Chris Huey	F	6'4"	165	FR	Kansas City, KS/Bishop Ward High School

Graduate Assistants ~ Matt Meyer (1st year), Tim Fitzgerald (1st year)

Student Assistants ~ Brady O'Neill, William McDaniel

Season Preview

After once again qualifying for the 2009-2010 KCAC Post-Season Tournament, the Spires beat Ottawa University and McPherson College before having their season end in the semi-finals at Bethany College. Guard Eric Avant was named the 2010 KCAC Newcomer of the Year and selected unanimous 1st Team All-KCAC. Avant was also selected as a 2010 NAIA Division II 2nd Team All-American after averaging 20.5 points per game and 8.2 rebounds per game. Also receiving honors was 6'2" guard JEB Greenberg, who was selected 2010 Honorable Mention All-KCAC as well as being named to the 2010 KCAC All-Freshman team.



The 2010-2011 Spires will showcase three players that saw starting action in the 2009-10 season and five players that played considerable minutes. This group is highlighted by JEB Greenberg, a 6'2" sophomore guard, who averaged 14 points a game and 5.7 rebounds and started 22 games as a freshman. He was named to the 2010 KCAC Honorable Mention All-Conference and KCAC All-Freshman teams for his efforts. Brandon Dougherty, a 6'0" senior point guard, started 30 games for USM in 2009-10 and averaged 9.3 points per game while leading the KCAC in assists (5.3) and steals (2.1) per game. Korie Fisher, a 6'4" senior forward, started the last 10 games and came on strong, averaging 6 points and 4.5 rebounds per contest. Those three players will be joined by senior Nick White, a 6'5" center, senior John Hale, a 6'3" forward, junior Justin Crutchfield, a 6'3" wing, red-shirt freshman Chase Cook, a 6'6" forward, sophomore Marc McGrory, a 6'6" forward, and junior Quinten White, a 6'3" guard, to contribute important minutes for the Spires this season.

With a history of strong recruiting, Coach Bishop and his staff have once again brought in another stellar recruiting class that should make an immediate impact for the Spires this year. Headlining the signees are 6'3" senior guard Brandon Coleman, 6'2" sophomore guard Chris Combs, 6'1" junior guard Chris Wing, 6'4" junior forward Reggie Davis, and 6'1" freshman guard Devon Dougherty. Freshman Gabriel Noll, a 6'4" forward, freshman Aaron Connor, a 6'0" guard, and freshman Chris Huey, a 6'4" forward, round out this season's freshmen class.